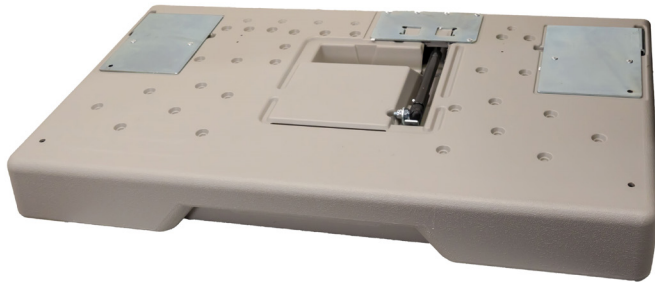




Horizontal Baby Changing Station Table

ITEM: 48100



Specifically designed for use in commercial restrooms such as in restaurants, businesses, preschools, daycares, churches, or even residential properties.

This changing station can hold a significant amount of stationary weight. It features a smooth, comfortable concave surface, accompanied by an adjustable safety strap to ensure children are securely held in place.

The maximum weight for the unit (including the baby and parcel bag) is 50 lb. (22.6 kg.) Exceeding the maximum weight may cause instability and potentially hazardous conditions.

TECHNICAL SPECIFICATION

Item	34874
Model	RS-CN-0500
Capacity	50 lb. (22.6 kg.)
Material	Low-Density Polyethylene (LDPE)
Color	Grey
Installation Type	Wall
Net Weight	23.8 lb. (10.8 kg.)
Net Dimensions	35" x 4" x 20" (889 x 102 x 508 mm)
Gross Weight	26 lb. (11.8 kg.)
Gross Dimensions	36.5" x 4.5" x 23" (927 x 114 x 584 mm)

